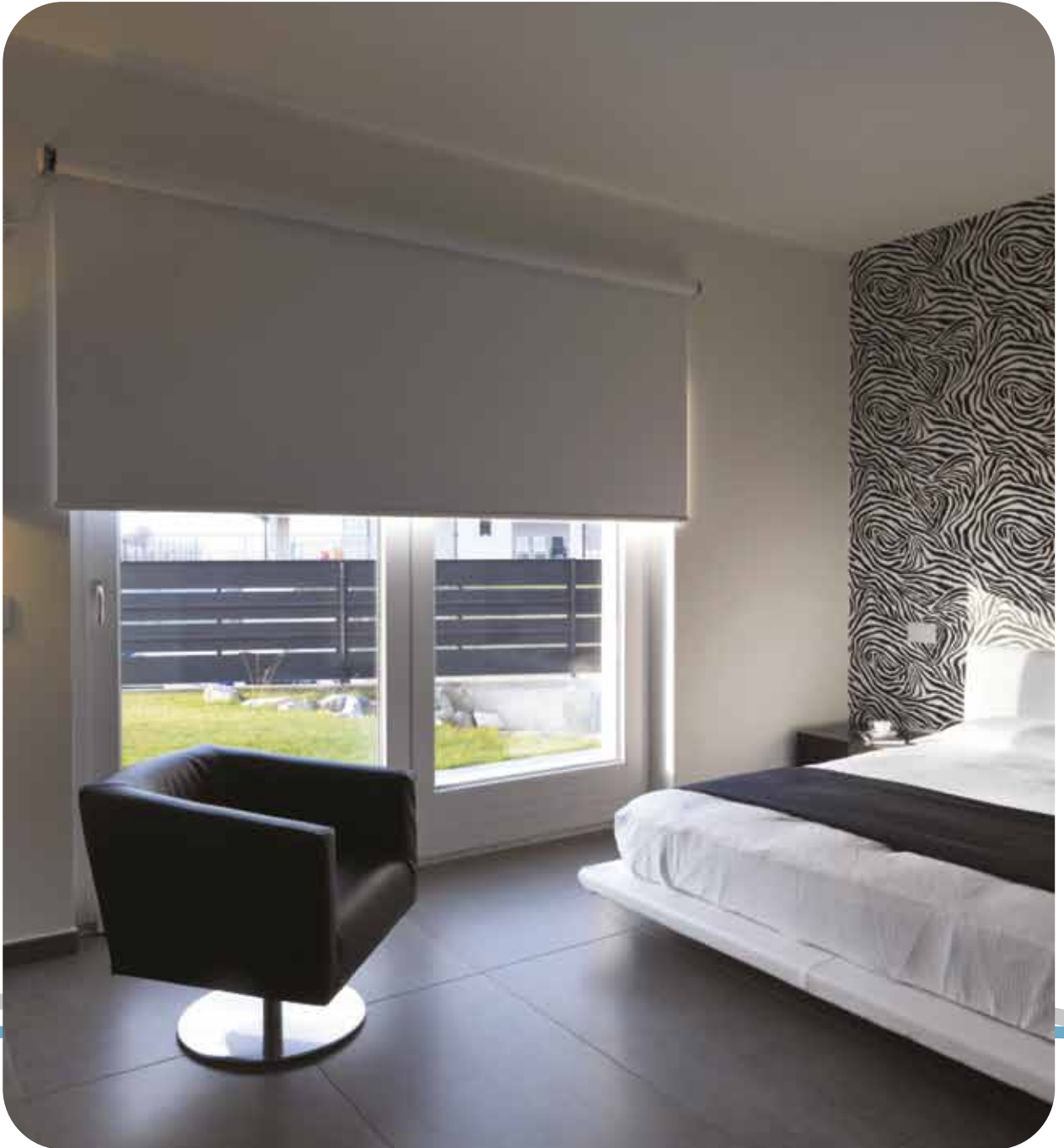




BlackOut



blackout

para estor enrollable y panel japonés

for roller blinds and panel tracks

BlackOut

Ancho - Referencia | Width - Item code

183 · **12212905** 244 · **12209905**

300 · **12202905**

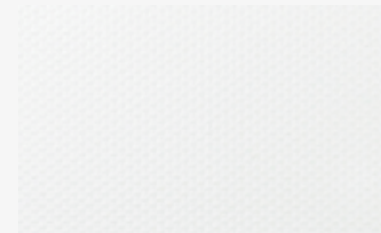
beige / trasera blanca | beige / white back



183 · **12212900** 244 · **12209900**

300 · **12202900**

blanco | white



183 · **12212113**

300 · **12202113**

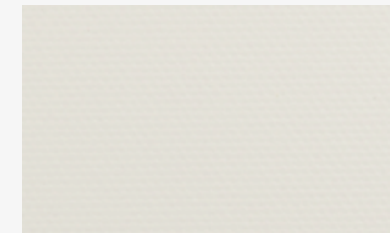
marfil | ivory



183 · **12212010** 244 · **12209010**

300 · **12202010**

perla | pearl



183 · **12212938** 244 · **12209938**

300 · **12202938**

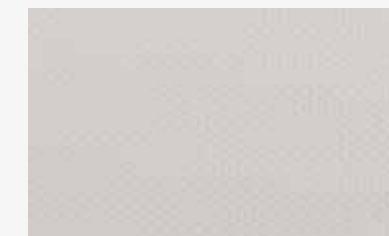
beige



183 · **12212868** 244 · **12209868**

300 · **12202868**

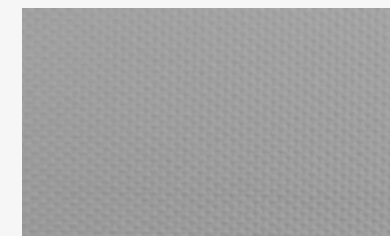
gris | grey



183 · **12212743** 244 · **12209743**

300 · **12202743**

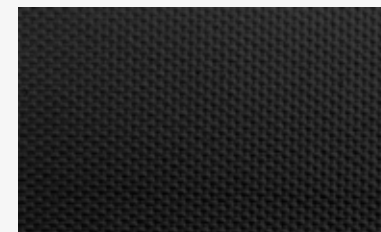
gris oscuro | dark grey



183 · **12212964** 244 · **12209964**

300 · **12202964**

negro | black



BlackOut



Datos técnicos *Technical info*

La información contenida en esta hoja es indicativa y no puede ser considerada vinculante.
Information contained in this sheet is only indicative and may not be considered as binding



Peso / *Weight*
537 g/m² ± 5 %



Anchos / *Widths*
183cm - 244cm* - 300cm
*excepto color 113 / *except colour 113*



Espesor / *Thickness*
0,29 mm ± 5 %



75 % PVC
25 % Fibra de vidrio
25 % Fiberglass



Longitud de rollo
Roll length
25 m ± 10 %



Resistente al fuego / *Fire resistance*
NFPA701 (USA)



Factor de Apertura 0 %
Openess Factor 0 %



Resistencia a la luz
Light fastness
AATCC 16-2003
Class 4.5 (After 80 AFU)



Limpiar con un trapo húmedo
Clean with a damp cloth