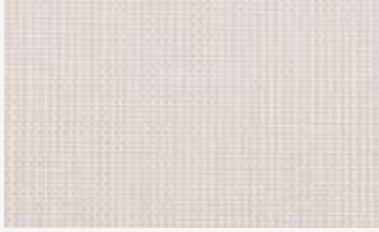


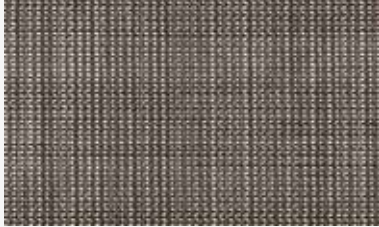
DENIM



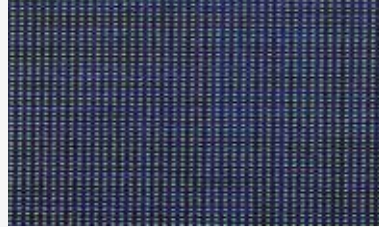
marfil
ivory
300-5% **12353113**



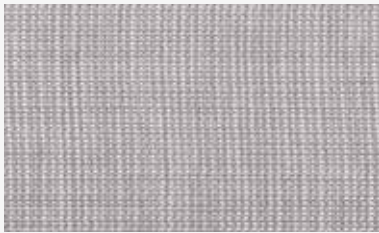
marrón
brown
300-5% **12353825**



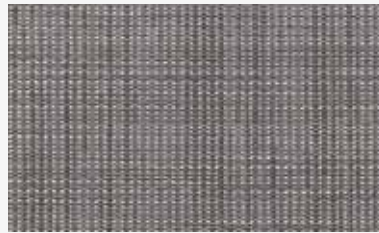
chocolate
chocolate
300-5% **12353814**



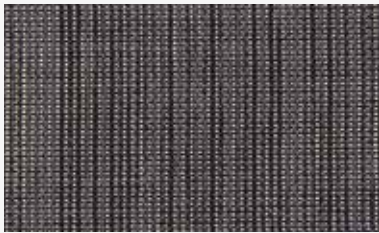
azul
blue
300-5% **12353512**



gris claro
light grey
300-5% **12353747**



gris medio
medium grey
300-5% **12353740**



gris oscuro
dark gray
300-5% **12353746**

| Características técnicas | Technical characteristic | Caractéristiques technique | Caratteristiche tecniche | Características técnicas | خصائص تقنية |
|---|--|---|---|--------------------------|---|
| Peso / Weight / Poids / Peso / Peso / وزن | 428 g/m² ±5 % | | | | |
| Ancho / Width / Largeur Largura / Larghezza / عرض | 300 cm | | | | |
| Espesor / Thickness / Épaisseur Espessura / Spessore / سماكة | 0,73 mm ±5 % | | | | |
| Largo del rollo / Roll length / Longueur du rouleau Comprimento do rolo / Lunghezza del rotolo / طول اللفة | 30 m ±5 % | | | | |
| Composición / Composition / Composition Composição / Composizione / التركيبة | 70% PVC 30% polyester | | | | |
| Resistente al fuego / Fire resistance Résistance au feu / Resistência ao fogo Resistente al fuoco / مقاوم النار | | | | | |
| Factor de Apertura / Openness Factor Facteur d'ouverture / Fator de Abertura Fattore di apertura / عامل الانفتاح | 5% | | | | |
| Urdimbre / Warp / Chaîne / Urdidura / Ordito Trama / Weft / Trame / Trama / Trama | 48 46 | | | | |
| | | Medio ambiente / Environment Environnement / Medio ambiente Ambiente / بيئة | | | OEKO-TEX 100 GREENGUARD |
| | | Resistencia a la tensión Tensile strength Résistance à la traction Resistência à tração Resistenza alla trazione قوة الشد | Urdimbre / Warp Chaîne / Urdidura Trama / Weft Trame / Trama | | 160 daN/5 cm 150 daN/5 cm DIN53354:1981 |
| | | Resistencia a la luz / Light fastness Résistance à la lumière / Resistência à luz Resistenza alla luce / مقاومة الضوء | | | AATCC 16-2003 Class 4.5 After 80 AFU |
| | | UV-A Factor | | | 95 % |
| | | Termosoldable / Thermo welding allowed / Thermoscellable Termoselável / Saldabile / قابل للحام | | | |
| | | Limpiar con un trapo húmedo / Wet wipe / Nettoyé avec un chiffon humide Limpe com um pano húmido / Pullire con un panno umido التنظيف باستخدام قطعة قماش مبللة | | | |