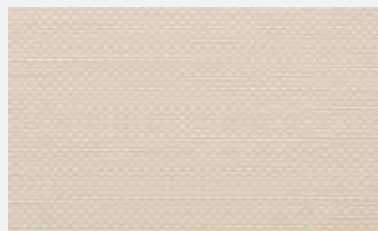


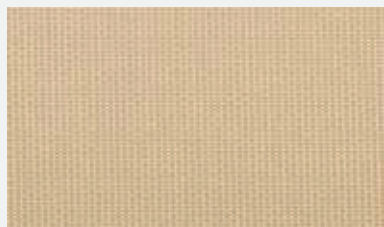
# BASIC 1%



blanco  
white  
300-1% **12361916**  
250-1% **12360916**  
200-1% **12359916**



blanco/lino  
white / linen  
300-1% **12361991**  
250-1% **12360991**  
200-1% **12359991**



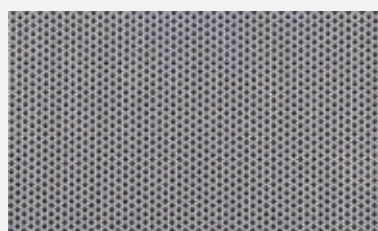
beige  
beige  
300-1% **12361115**  
200-1% **12359115**



blanco/gris  
white grey  
300-1% **12361992**  
250-1% **12360992**  
200-1% **12359992**



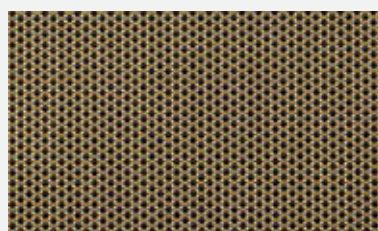
gris medio  
medium gray  
300-1% **12361740**  
250-1% **12360740**  
200-1% **12359740**



grafito  
graphite  
300-1% **12361715**  
250-1% **12360715**  
200-1% **12359715**



negro  
black  
300-1% **12361911**  
250-1% **12360911**  
200-1% **12359911**



cappuccino  
cappuccino  
300-1% **12361713**  
250-1% **12360713**  
200-1% **12359713**

Características técnicas	Technical characteristic	Caractéristiques technique	Caratteristiche tecnici	Características técnicas	خصائص تقنية
<b>Peso / Weight / Poids / Peso / Peso / وزن</b>	<b>470 g/m<sup>2</sup> ±10 %</b>				
<b>Ancho / Width / Largeur / Largura / Larghezza / عرض</b>	<b>300 cm</b>				
<b>Espesor / Thickness / Épaisseur / Espessura / Spessore / سماكة</b>	<b>0,75 mm ±5 %</b>				
<b>Largo del rollo / Roll length / Longueur du rouleau / Comprimento do rolo / Lunghezza del rotolo / طول اللفة</b>	<b>30 m ±5 %</b>				
<b>Composición / Composition / Composition / Composição / Composizione / التركيبة</b>	<b>70% PVC 30% polyester</b>				
<b>Resistente al fuego / Fire resistance / Résistance au feu / Resistência ao fogo / Resistente al fuoco / مقاوم النار</b>	<b>FR NFPA701(USA) M1 - CLASE 1 UNE-EN 13773:2003</b>				
<b>Factor de Apertura / Openness Factor / Facteur d'ouverture / Fator de Abertura / Fattore di apertura / عامل الانفتاح</b>	<b>1%</b>				
<b>Urdimbre / Warp / Chaîne / Urdidura / Ordito / Trama / Weft / Trame / Trama / Trama</b>	<b>64 40</b>				
		<b>Resistencia a la tensión / Tensile strength / Résistance à la traction / Resistência à tração / Resistenza alla trazione / قوة الشد</b>	<b>Urdimbre / Warp / Chaîne / Urdidura / Trama / Weft / Trame / Trama</b>	<b>206 daN/5 cm 150 daN/5 cm DIN53354:1981</b>	
		<b>Resistencia al rasgado / Tearing strength / Résistance à la déchirure / Resistência ao rasgamento / Resistenza allo strappo / مقاومة التمزق</b>	<b>Urdimbre / Warp / Chaîne / Urdidura / Trama / Weft / Trame / Trama</b>	<b>34,6 daN 30,4 daN DIN53363:2003</b>	
		<b>Medio ambiente / Environment / Environnement / Medio ambiente / Ambiente / بيئة</b>		<b>OEKO-TEX 100 GREENGUARD</b>	
		<b>Resistencia a la luz / Light fastness / Résistance à la lumière / Resistência à luz / Resistenza alla luce / مقاومة الضوء</b>		<b>AATCC 16-2003 Class 4.5 After 80 AFU</b>	
		<b>UV-A Factor</b>		<b>95 %</b>	